



SAILING INSTRUCTIONS

The BDO Barcelona Laser Master Championship will be held from the 7th of June to the 9th June in Barcelona, organized by the Fundació Reial Club Nàutic de Barcelona with collaboration of Federació Catalana de Vela, the Barcelona International Sailing Center and the Real Club Náutico de Barcelona.

1. RULES

- 1.1. The regatta will be governed by the “rules” according to the Notice of Race.
- 1.2. The Prescriptions of the National Authority will apply.
- 1.3. In all rules governing this regatta, (NP) denotes a rule that shall not be grounds for protests by a boat. This changes RRS 60.1(a).

2. NOTICES TO COMPETITORS

Notices to competitors will be posted on the Official Notice Board (ONB) located at the main entrance of the Barcelona International Sailing Center.

3. CHANGES TO SAILING INSTRUCTIONS

Any change to the Sailing Instructions will be posted Official Notice Board (ONB) one hour before the first warning signal of the day it will take effect, except for any change to the schedule of the races which will be posted by 19:00 hrs on the day before the change will take effect.

4. SIGNALS MADE ASHORE AND OTHER SIGNALS

- 4.1. Signals made ashore will be displayed on the Official Signal Mast (OSM) located at the BISC esplanade.
- 4.2. In addition to the Race Signals described in the RSS, the following signals will be used:
 - 4.2.1 (NP, DP) Flag “G” flown ashore means “NO BOAT shall leave the boat park area”. When flown from a Committee vessel afloat it means “All boats shall return to the boats park as soon as possible”.
 - 4.2.2. Flag “AP” with two sound signals displayed ashore means: “The race is postponed. The first warning signal will be made not less than 45 minutes after the AP flag is lowered with one sound signal.”
 - 4.2.3. When flag “L” is displayed ashore over a numeral pennant, the numeral indicates the number of the last notice published.
- 4.3. When a flag is displayed with a starting group, category or class flag, this signal will affect only this starting group, category or class.



5. SPARE

6. RACING FORMAT

- 6.1. Up to 9 fleet races will be sailed.
- 6.2. A minimum of 1 completed race is required to constitute the regatta.
- 6.3. There will be separate rankings for each category according to the Notice of Race. Men and Women of the same category will race together.

This course assignment can be changed. The final and official assignment courses will be posted on board of the Race Committee boat, according to Sailing Instruction 12.2. These changes will not be grounds for redress.

7. SCHEDULE OF RACES

DATE	TIME	DESCRIPTION
Thursday, 28 th June	From 10 to 18 h.	Registration
Friday, 29 th June	15:00 h.	Starting time of the first race of the day
Saturday, 30 th June	12:00 h.	Starting time of the first race of the day
Sunday, 1 st June	12:00 h.	Starting time of the first race of the day

- 8.2. Any race whose warning signal has not been made by 15:00 hrs on Sunday 1st June will be abandoned and will not be re-sailed.

8. SCORING

- 8.1. When 4 or more races are completed, 1 race with the worse score will be excluded.
- 8.2. To request correction of an alleged error in posted race or series results, a boat may complete a scoring enquiry form available at the race office.
- 8.3. The results for the categories will be extracted from the overall results of the corresponding class without recalculation, on the last day of racing.

9. CLASS FLAGS AND FLEET IDENTIFICATION

- 9.1. The Class Flags for the fleets will be:

- Laser Standard: Laser Class insignia on white background
- Laser Radial: Laser Class insignia on blue background

- 9.2. **(NP, DP)** During registration each competitor will receive two stickers with a unique number that corresponds to the bow number which shall be fixed on each side of the front part of the hull, at 200mm (+/- 100mm) from the bow. In the case of a sticker being lost, replacements shall be obtained from the Race Office. Competitors shall make every reasonable effort to ensure stickers stay firmly

affixed. The relevant area of the hull shall be thoroughly cleaned and dried before application of the numbers.

- 9.3 (NP, DP) The sails of Women competitors shall carry a red rhombus above the top batten pocket on both sides, according to the class rules.

10. COURSE AREA

The course area is located in Barcelona waters in front Port Forum and there will be only one area (see Appendix II).

11. THE COURSE

- 11.1. Trapezoid courses will be used with inner and outer loops. An alternative course may be sailed (see Appendix I.) Appendix I show the courses, the order in which marks are to be passed and the side on which each mark is to be left.
- 11.2. Before the warning signal the Race Committee will display the course to be sailed. The Race Committee has the right to change the starting order at any time.
- 11.3. The length of the course will be set for a target time of 40 minutes. Failure to meet the target time will not be grounds for redress. This changes RRS rule 62.1(a).

12. MARKS

The mark description is shown in Appendix I.

13. THE START

- 13.1. Starts will be made in accordance with RRS 26. Class flags described in SI 9.1 will be used as a warning signal flags.
- 13.2. The starting line will be set between the staff displaying an orange flag on the Race Committee Boat and the starting mark.
- 13.3. The warning signal for the next fleet will be given as soon as practicable after the previous start.
- 13.4. When a race has finished, the warning signals for a subsequent race on the same day will be given as soon as practicable.
- 13.5. The first warning signal of a group sequence will be preceded by the "ORANGE" flag described in SI 13.2, which means: "The next warning signal will not be given until five minutes have elapsed from the display of this flag"
- 13.6. Starting Order: The order of the starts will be determined with the corresponding class flags. The Race Committee will, in principle, keep the same starting orders every day. If the same number of races has not been sailed by all classes, the Race Committee can change the starting order using the corresponding class flags.

- 13.7. (NP, DP)Boats whose warning signal has not been displayed shall keep clear of the starting line between the warning and up to one minute after the starting signals of the preceding fleet start.
- 13.8. A boat that starts more than 4 minutes after her starting signal will be scored DNS without a hearing. This changes Appendix A4 and Appendix A5.

14. SPARE

15. ABANDONING A RACE

The Race Committee may abandon a race due to a storm, apparent or announced by the weather forecast, a major wind shift, unstable winds or a wind drop (This changes RRS 32.1).

16. THE FINISH

The finishing line will be between a staff displaying an orange flag on a Race Committee Boat and the port-end finishing mark.

17. TIME LIMIT

- 17.1. Boats failing to finish within 15 minutes after the first boat sails the course and finishes will be scored DNF without a hearing. This changes RRS 35, Appendix A.4 and Appendix A.5.
- 17.2. Time limits and target times for the first boat are as follows:
- Mark 1 time limit: 20 minutes
 - Course target time: 40 minutes
 - Race Time limit: 70 minutes
- If no boat has passed Mark 1 within the Mark 1 time limit the race shall be abandoned.
- Non-compliance of the target time shall not be grounds for redress. This changes RRS 62.1 (a)

18. PROTESTS

- 18.1. Protests shall be made in writing using the forms available at the Race Office and delivered before the Protest Time Limit which will be one hour after the last boat of the fleet has finished the last race of the day or the Race Committee signals there are no more races, whichever is later.
- 18.2. The schedule of hearings will be posted within 20 minutes after the protest time limit. Protests will be heard in the Jury room at Barcelona International Sailing Center.
- 18.3. Protests by the Race Committee, Jury or Technical Committee will be posted on the ONB before the end of the protest time limit to inform boats under RRS rule 61.1(b).
- 18.4. On the last schedule day of racing a request for redress based on a protest committee decision shall be delivered no later than 30 minutes after the decision was posted. This changes RRS 62.2.
- 18.5 A list of boats that, under SI 1.3, have been penalized for breaking RRS 42 will be posted on the ONB.

19. PRIZES

Prizes will be awarded to the following categories, as long as there are a minimum of 5 participants in each accordance with the Notice of Race.

Standard Fleet: Apprentice, Master, Grand Master and Great Grand Master

Radial Fleet: Apprentice, Master, Grand Master, Great Grand Master, Legend and Women.

20. SAFETY (DP, NP)

- 20.1 Except in case of emergency, boats shall only return ashore at Port Fórum(BISC)
- 20.2. A boat that retires from a race must notify the Race Committee or the Race Office as soon as possible.
- 20.3. Boats arriving for any reason at a point ashore other than Port Fórum shall report immediately by telephone to the Regatta Coordinator (+34 650 501 961).
- 20.4. During registration each competitor will receive an identification card with the same number mentioned on SI 9.2 and shall be fixed to the boat trolley (dolly) handle, in such a way that the number is easily seen.
- 20.5. The Race Committee, the Regatta Coordination Centre, the Race Office and the Safety Boats will use VHF channel 71 for their communications.
- 20.6. While not racing, all boats shall remain at the boat park area. In case a competitor decides to leave, e/she must inform the Race Office immediately.

21. DISCLAIMER

All boats taking part in the event do so at their own risk and responsibility.

The Organizing Committee or any person or party involved with the organization of the event disclaim any and every responsibility whatsoever for loss, damage, injury or inconvenience that might occur to persons or goods, both ashore and at sea, as a consequence of the participation in the races covered by the Notice of Race and the Sailing Instructions.

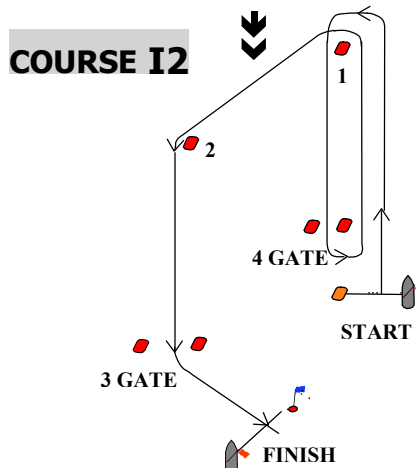
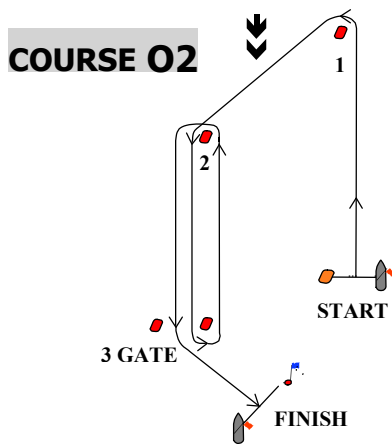
Attention is drawn to Fundamental Rule 4 – DECISION TO RACE in RRS Part 1 which states:

“The responsibility for a boat’s decision to participate in a race or to continue racing is hers alone”.

22. IDENTIFICATION OF RACE MANAGEMENT VESSELS

- 22.1. Race Committee boats will display an orange flag.
- 22.2. Protest Committee boats will display a white flag with letter “J”
- 22.3. Rescue boats will display a white flag.

APPENDIX I: Courses and Marks



COURSE "O2": Start, 1(port), 2(port), 3(gate*), 2(port), 3(gate*) and finish

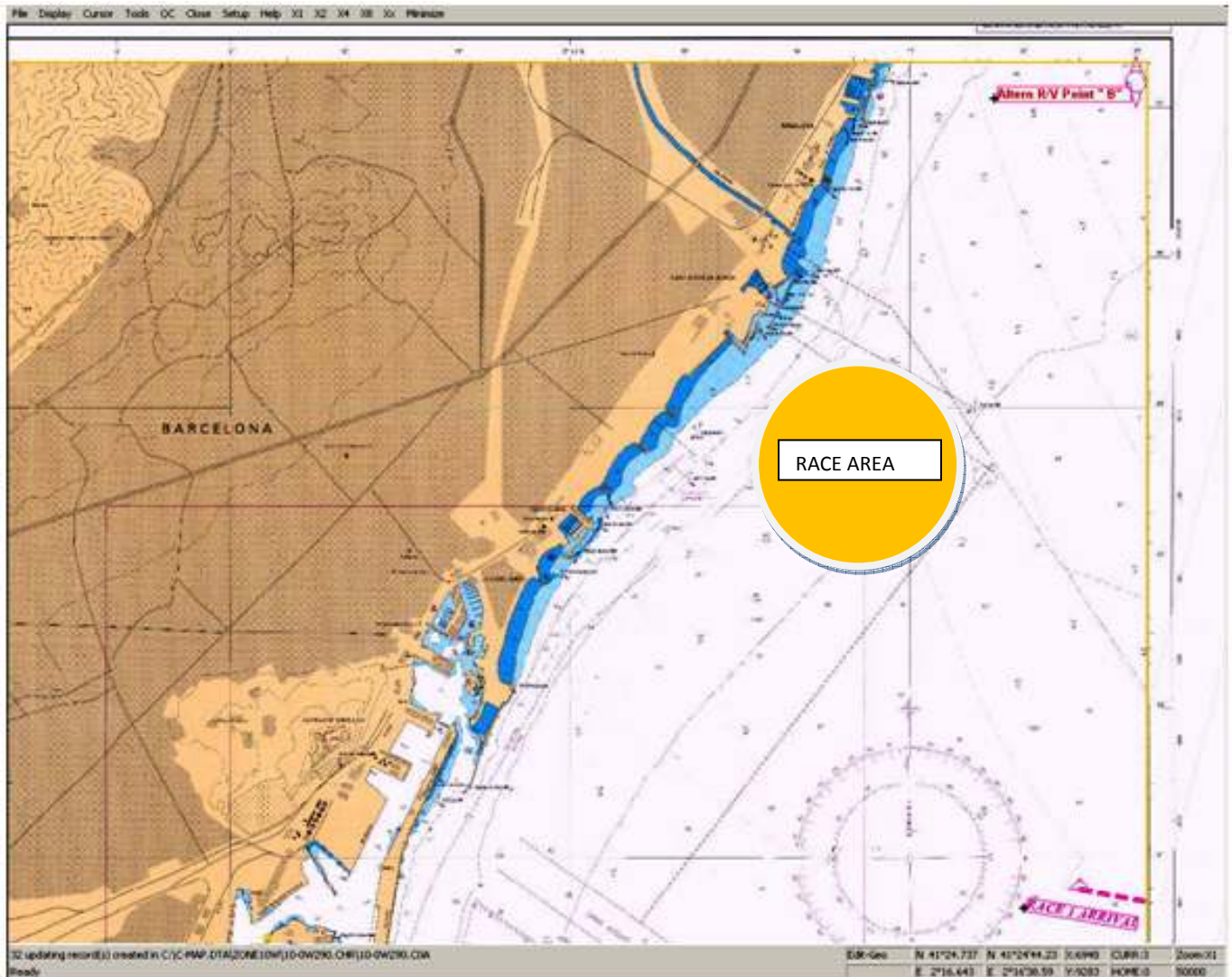
COURSE "I2": Start, 1(port), 4(gate*), 1(port), 2(port), 3(gate*) and finish

(*): If one of the gate marks is missing, the remaining mark shall be rounded to port.

MARK DESCRIPTION

Course Marks:	Cylindrical, red
Starting Mark:	Race Committee vessel and orange inflatable, cylindrical mark
Change of course mark:	Green, inflatable, tetrahedral mark
Finishing Mark:	Race Committee boat and buoy with staff displaying a blue flag

APPENDIX II: Race area



ADDITIONAL INFORMATION (NOT PART OF THESE SAILING INSTRUCTIONS):

EMERGENCY PHONES (24 HOURS):

Regatta Coordinator: (+34) 650.501.961

Emergencies (call centre): 112

